

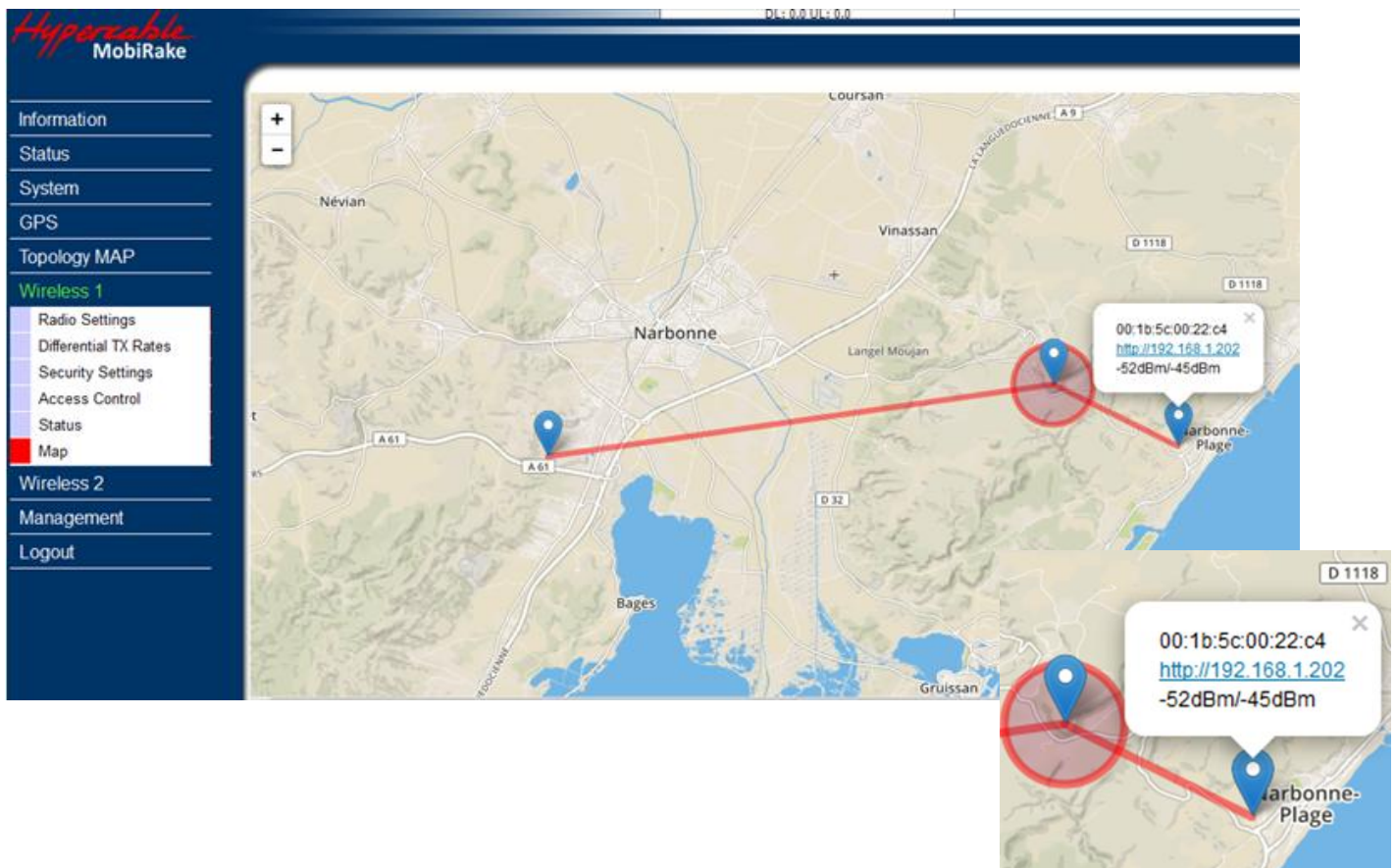


$$e = \sum_{n=0}^{\infty} \frac{1}{n!} = \lim_{n \rightarrow \infty} \left(\frac{1}{0!} + \frac{1}{1!} + \frac{1}{2!} + \dots + \frac{1}{n!} \right)$$

SkyMesh HYC-4011-27

5GHz 4x4 MIMO HT-OFDM Radio

Dual Channels Mobile Mesh network



User Manual

Includes install, configuration and trouble shooting information for the broadband



$$e = \sum_{n=0}^{\infty} \frac{1}{n!} = \lim_{n \rightarrow \infty} \left(\frac{1}{0!} + \frac{1}{1!} + \frac{1}{2!} + \dots + \frac{1}{n!} \right)$$





Recommandations à suivre impérativement

ATTENTION NE PAS METTRE SOUS TENSION SANS QUE L'EQUIPEMENT NE SOIT RACCORDE A UNE ANTENNE VERIFIEE OU A UNE CHARGE FICTIVE DE 0.5 à 5 WATTS 50 OHMS SELON LE TYPE DE MODEM.

ATTENTION A LA POLARITE DU 48 VDC NE PAS UTILISER DE POE AUTRE QUE CELUI FOURNI.

Attention, vérifiez en vous connectant aux antennes préinstallées, avec l'aide d'un analyseur de spectre à mémoire que le canal radio que vous allez choisir dans la bande utilisée (445-505 MHz, 2.4-2.5 GHz, 4.8-6.2 GHz) n'est pas occupé par une porteuse d'un niveau supérieur à -70 dBm (par exemple -60 dBm est un niveau supérieur à -70 dBm) **dans tous les cas choisir la zone de votre canal ou les niveaux parasites mesurés sont les plus faibles.**

Manuel du Montage de l'antenne et du modem radio :

- Attention, le modem radio ayant changé le montage du modem est légèrement différent le support du modem est devenu aussi un capot protecteur.
 - Impératifs techniques de pose [ICI](#)
 - Montage antenne [ICI](#)
 - Montage cablage réglages Modems [ICI](#)
- 
- 
- **Attention** certains modèles ont pour le pointage et a la place des écouteurs un Barled indiquant sur la CPE le niveau auquel est reçu le CPE par la station de base distante, si le pointage est fait par une seule personne qui doit se déplacer d'un point a un autre il faudra inverser les fonctions base station et CPE lors du pointage afin de bénéficier du visuel du barled sans avoir a se déplacer du côté opposé. Si le pointage est fait par deux personnes en liaison radio la personne coté "base sation" demandera a la personne coté CPE quel est l'affichage obtenu selon le pointage azimutal en cours.
 - **Attention** de ne pas pointer sur un lobe secondaire de l'antenne.
- Notice de montage des modems sur les antennes [ICI](#)
 - Vérifiez le contenu des cartons associés aux Modems et ne pas jeter les cartons sans les ouvrir entièrement. Conserver les cartons emballages pour les retours sous garantie, les CD et manuels sont dans chaque Modem radio en cas de doute téléphoner au 06 82 82 38 73 ou ayez recours a un spécialiste [installateur certifié](#) pour la pose et configuration des radio Hypercable.



WARNING ATTENTION selon le découplage des antennes et la largeur du canal en version 4x4 le canal CH1 2x2 doit être éloigné du canal Ch2 2x2 de 200 Mhz à 400 Mhz par exemple CH1 sur 5700 MHz et Ch2 sur 5300 MHz pour des antennes omnidirectionnelles découplées dans le plan vertical afin d'éviter interférences et désensibilisation. En cas d'impossibilité des filtres de bande doivent être prévus.



$$e = \sum_{n=0}^{\infty} \frac{1}{n!} = \lim_{n \rightarrow \infty} \left(\frac{1}{0!} + \frac{1}{1!} + \frac{1}{2!} + \dots + \frac{1}{n!} \right)$$

Copyright

Copyright © 2015 all rights reserved. No part of this publication may be reproduced, adapted, stored in a retrieval system, translated into any language, or transmitted in any form or by any means without the written permission of the supplier.

About This Manual

This manual includes install, configuration and trouble shooting for the 5GHz 4x4 MIMO HT-OFDM MESH Radio. It can help you in avoiding the unforeseen problems and use the outdoor radio correctly.

Technical Support

If you have difficulty resolving the problem while installing or using the wireless backhaul, Please contact the supplier for support.

Conventions

This publication uses the following conventions to convey instructions and information:



NOTE

This symbol means **reader take note**. Notes contain helpful suggestions or references to materials not contained in this manual.



CAUTION

This symbol means **reader be careful**. In this situation, you might do something that could result in equipment damage or loss of data.



WARNING

This warning symbol means **danger**. You are in a situation that could cause bodily injury. Before you work on any equipment, be aware of the hazards involved with electrical circuitry and be familiar with standard practices for preventing accidents.



$$e = \sum_{n=0}^{\infty} \frac{1}{n!} = \lim_{n \rightarrow \infty} \left(\frac{1}{0!} + \frac{1}{1!} + \frac{1}{2!} + \dots + \frac{1}{n!} \right)$$

Table of Contents

CONVENTIONS3

CHAPTER 1 INTRODUCTION.....5

 1-1 FEATURES AND BENEFITS 6

CHAPTER 2 HARDWARE INSTALLATION.....9

 2-1 PRODUCT KIT 10

 2-2 SYSTEM REQUIREMENTS 10

 2-3 MECHANICAL DESCRIPTION 11

 2-4 HARDWARE INSTALLATION 14

 2-5 LED INDICATORS 16

CHAPTER 3 CONFIGURATION 17

 3-1 START-UP AND LOG IN 17

 3-2 MESH PROTOCOL CONFIGURATION 26

 3-3 WIRELESS SETUP 27

 3-4 MANAGEMENT 32

$$e = \sum_{n=0}^{\infty} \frac{1}{n!} = \lim_{n \rightarrow \infty} \left(\frac{1}{0!} + \frac{1}{1!} + \frac{1}{2!} + \dots + \frac{1}{n!} \right)$$

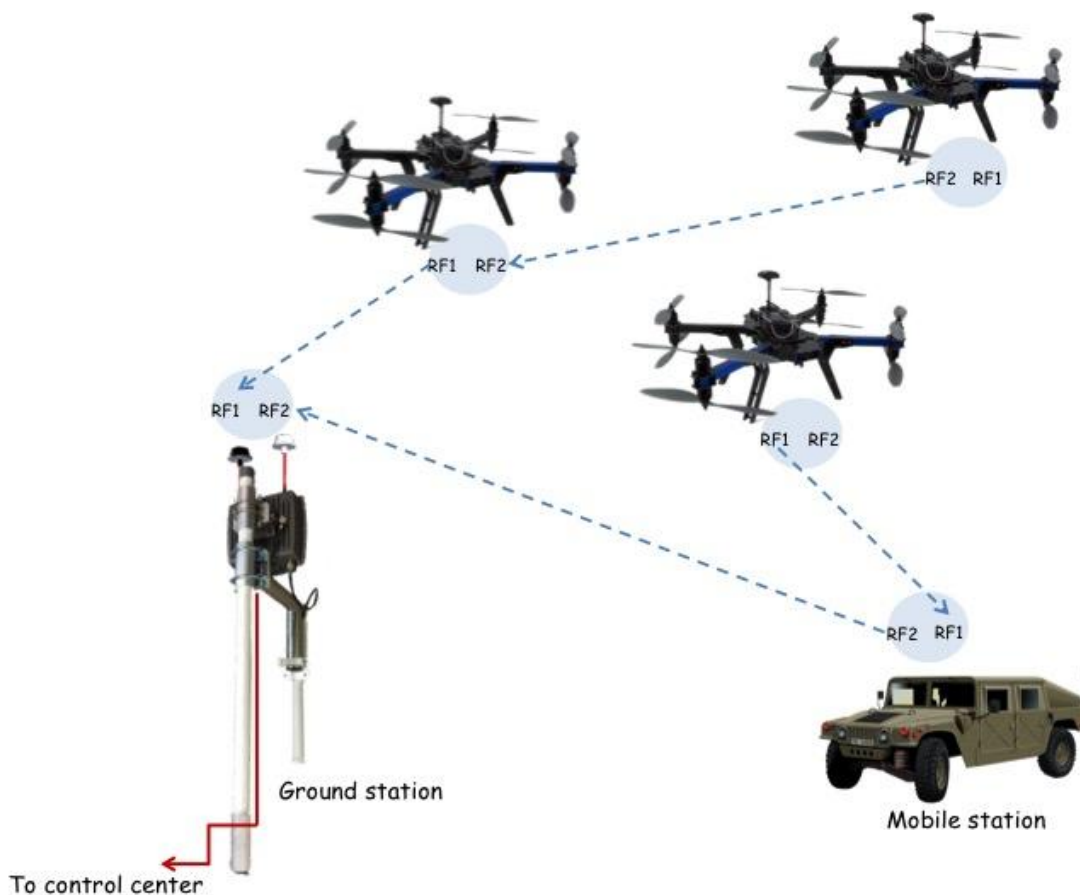
Chapter 1 Introduction

With MIMO High Throughput OFDM (HT-OFDM) and Dual Channels Mobile Mesh Network technology, this radio is a high capacity Mobile Mesh node for 5GHz ISM band wireless deployment.

There are 14 channel BWs (2.5/3/3.5/4/5/6/7/8/10/15/20/30/40/52 MHz) can be selected easily by software. This feature provides the flexibility of deployment channel plan in high density city area.

Compare to the traditional Single Channel Mesh Network, the Dual Channels Mobile Mesh Network design makes the Mesh Network working better and more efficiency because of below advantages.

1. Reduce the Co-channel interferences,
2. Better efficiency and throughput after multi-hops repeating.
3. Shorter latency for the Mesh Network.
4. More possibilities of the deployment plan with different antenna design for different applications and environments.





$$e = \sum_{n=0}^{\infty} \frac{1}{n!} = \lim_{n \rightarrow \infty} \left(\frac{1}{0!} + \frac{1}{1!} + \frac{1}{2!} + \dots + \frac{1}{n!} \right)$$

1-1 Features and Benefits

4x4 MIMO HT-OFDM with dual channels Mobile Mesh

Radios implement 4x4 MIMO HT-OFDM with two independent channels and the unique mesh network algorithm. That makes the radios switching fast between the dual channels and keep finding the best path for data transmission, to realize the seamless Mobile Mesh roaming with high efficiency -- higher capacity and shorter latency.

Self-healing & self-forming Mesh Protocol

Automatic configuration and routing enables the mesh networks to be self-forming and self-healing.

Frequency Redundant for P-T-P link

When the 4x4 Mesh radio deployed as PTP link, RF2 and RF1 can worked as Frequency redundant. When RF1 getting worse or failed, RF2 can replace the RF1 for data transmission.

Effective spectrum utility / variable capacities with 14 channel BWs

This radio has 14 channel bandwidths (2.5/3/3.5/4/5/6/7/8/10/15/20/30/40/52 MHz) for optional, which is adjustable via software. This function provides flexibilities of channel plan in crowded urban environment and variable capacities for different applications.

MIMO HT-OFDM technology provides amazing spectral efficiency

Up to 5.2 bits/s/Hz amazing spectral efficiency for all channel BW provided by the MIMO HT-OFDM technology. Work with the variable channel BW options, these two combination features provides great benefits for both crowded urban area and rural area with less interference.

Channel BW (MHz)	2.5	3	3.5	4	5	6	7	8	10	15	20	30	40	52
Real TCP throughput (Mbps)	12	14	17	20	25	30	35	40	51	77	104	158	215	268
Application area	Valuable spectrum				Crowded urban						Rural			



$$e = \sum_{n=0}^{\infty} \frac{1}{n!} = \lim_{n \rightarrow \infty} \left(\frac{1}{0!} + \frac{1}{1!} + \frac{1}{2!} + \dots + \frac{1}{n!} \right)$$

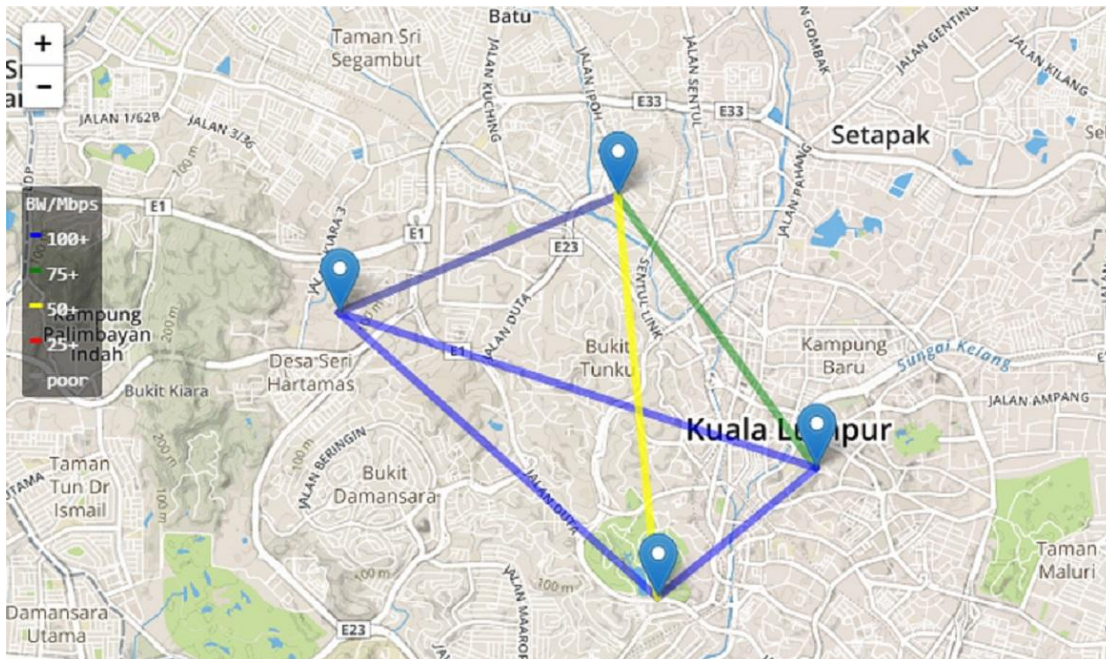
FEATURES

- 4X4 MIMO HT-OFDM Mesh Radio
- Self-healing & Self-forming Mesh
- Dual Channels x Mobile Mesh Network
- ±2 ppm Frequency Stability for Mobility & NLOS
- Transmit Power Control :

max
75% of max (-1dB)
60% of max (-2dB)
50% of max (-3dB)
40% of max (-4dB)
30% of max (-5dB)
25% of max (-6dB)
20% of max (-7dB)
16% of max (-8dB)
12% of max (-9dB)
10% of max (-10dB)
min

Supports settable transmit power levels to adjust coverage cell size, ranging from max.(100%) to 10% of max., the adjustment step is 1dB.

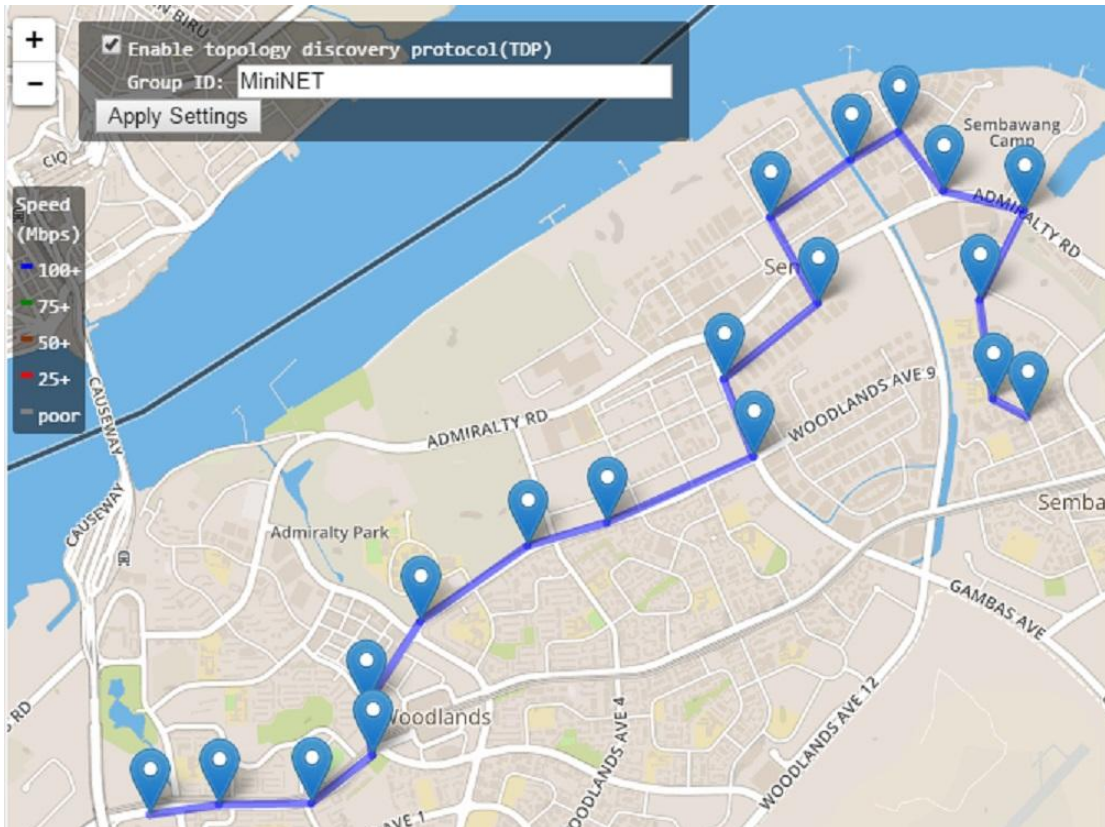
- 14 Channel BW (2.5 / 3 / 3.5 / 4 / 5 / 6 / 7 / 8 / 10 / 15 / 20 / 30 / 40 / 52 MHz)
- GPS Coordinates and Internet map database





$$e = \sum_{n=0}^{\infty} \frac{1}{n!} = \lim_{n \rightarrow \infty} \left(\frac{1}{0!} + \frac{1}{1!} + \frac{1}{2!} + \dots + \frac{1}{n!} \right)$$

Topology Map – Multi-hops repeating



Topology Map – Mesh Network

- 5.2 bits/s/Hz amazing spectral efficiency
- Multi-hops repeating & Built-in NMS
- High Efficiency in Multi-hops Repeating
 - Low Throughput dropped @ 40MHz Ch BW (≥ 170 Mbps @ 20 hops)
 - Short Latency increased @ 40MHz Ch BW (≤ 35 ms @ 20 hops)
- Network Architecture:
 - P-T-P: 1+0 / 2+0 / 1+1
 - P-T-MP
 - Ring (Redundant)
 - Mobile MESH
- Fast Seamless Roaming
- High Speed up to 180km/hr
- IEC61000-4-5 Surge Protection
- IP-68 Water & Dust Resistant



$$e = \sum_{n=0}^{\infty} \frac{1}{n!} = \lim_{n \rightarrow \infty} \left(\frac{1}{0!} + \frac{1}{1!} + \frac{1}{2!} + \dots + \frac{1}{n!} \right)$$

Chapter 2 Hardware Installation

This chapter describes initial setup of the 5GHz 4x4 MIMO HT-OFDM MESH Radio

Warnings



In order to comply with international radio frequency (RF) exposure limits, dish antennas should be placed at a minimum of 8.7 inches (22 cm) from the bodies of all persons. Other antennas should be placed a minimum of 7.9 inches (20 cm) from the bodies of all persons.



Do not work on the system or connect or disconnect cables during periods of lightning activity.



This equipment must be grounded. Never defeat the ground conductor or operate the equipment in the absence of a suitably installed ground conductor. Contact the appropriate electrical inspection authority or an electrician if you are uncertain that suitable grounding is available.



Ultimate disposal of this product should be handled according to all national laws and regulations.



Do not locate the antenna near overhead power lines or other electric light or power circuits, or where it can come into contact with such circuits. When installing the antenna, take extreme care not to come into contact with such circuits, as they may cause serious injury or death. For proper installation and grounding of the antenna, please refer to national and local codes (e.g. U.S.:NFPA 70, National Electrical Code, Article 810, in Canada: Canadian Electrical Code, Section 54).



Only trained and qualified personnel should be allowed to install, replace, or service this equipment.



To meet regulatory restrictions, the radio and the external antenna must be professionally installed. The network administrator or other IT professional responsible for installing and configuring the unit is a suitable professional installer. Following installation, access to the unit should be password protected by the network administrator to maintain regulatory compliance.



$$e = \sum_{n=0}^{\infty} \frac{1}{n!} = \lim_{n \rightarrow \infty} \left(\frac{1}{0!} + \frac{1}{1!} + \frac{1}{2!} + \dots + \frac{1}{n!} \right)$$



The 5GHz 4x4 MIMO HT-OFDM MESH Radio and POE injector can be damaged by incorrect power application. Read and carefully follow the installation instructions before connecting the system to its power source.



Follow the guidelines in this chapter to ensure correct operation and safe use of the 5GHz 4x4 MIMO HT-OFDM MESH Radio.

2-1 Product Kit

Before installation, make sure that you the following items:

- 5GHz 4x4 MIMO HT-OFDM MESH Radio.....X 1
- Power over Ethernet.....X 1
- Power Adapter.....X 1
- Power Cord.....X 1
- Water-proof connector for SFTP cable.....X 1
- Mounting kitX 1
- Product CD.....X 1
- Quick Installation Guide.....X 1

NOTE: If any of the above items are missing or damaged, please contact your local dealer for support.

2-2 System Requirements

Before installing the long distance wireless backhaul, please make sure that these requirements have been met:

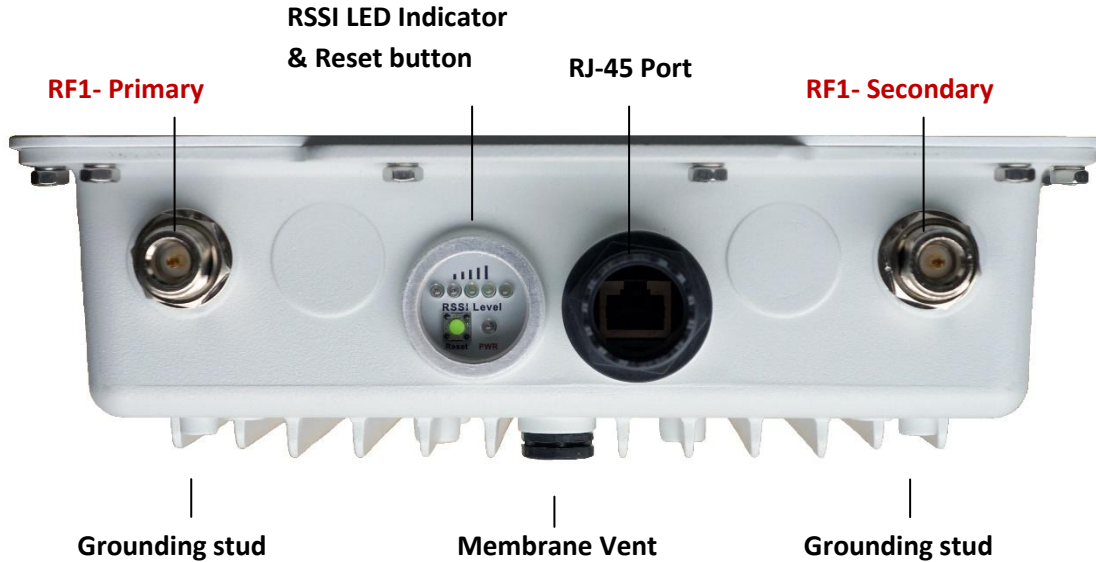
- A 10/100/1000 Mbps Local Area Network device such as a hub or switch. (optional)
- Category 5 UTP or STP networking cable. (From the PC to POE)
- Category 5 SFTP or SFTP networking cable. (From the radio to POE)
- A Web browser for configuration: Google Chrome or Microsoft IE 9.0 or later.
- Installing TCP/IP protocol to the computer.

2-3 Mechanical Description

Please refer to the following table for the meaning of each feature.

ODU: (External antenna)

Bottom Side



Outdoor Multi-function Radio Figure

Note:

1. RF1-Primary port connect to V. polarization of the MIMO antenna.
2. RF1-Secondary port connect to H. Polarization of the MIMO antenna.

1	RJ-45 Port	Use the SFTP cat.5 cable with weatherproof connector to connect to the "To ODU" side of the POE injector.
2	N- Jack Antenna Connector	Here you can attach the N-type external antenna to the 5GHz 4x4 MIMO HT-OFDM MESH Radio. In order to improve the RF signal radiation of your antenna, proper antenna installation is necessary.
3	Grounding stud	Connect to the ground conductor with the ground wire.
4	Reset button	Revolve the plastic cap, you will see the reset button. Press it and hold for 5~10 seconds, the radio will back to factory default settings.
5	RSSI LED Indicator	Indicate the link status info of the Wireless modules, please refer to segment 2-5 for the LED indicating rules.
6	Membrane Vent	<ol style="list-style-type: none"> 1. Moisture vapor permeable to help aid in condensation and fogging reduction in the ODU. 2. High airflow allows pressure equalization to prevent stress on enclosure seals

Note: screw the cap back well after you use the reset button or beeper.



This equipment must be grounded. Never defeat the ground conductor or operate the equipment in the absence of a suitably installed ground conductor. Contact the appropriate electrical inspection authority or an electrician if you are uncertain that suitable grounding is available.

$$e = \sum_{n=0}^{\infty} \frac{1}{n!} = \lim_{n \rightarrow \infty} \left(\frac{1}{0!} + \frac{1}{1!} + \frac{1}{2!} + \dots + \frac{1}{n!} \right)$$

Antenna location definition:

RF2- Secondary

RF2- Primary



RF1- Secondary

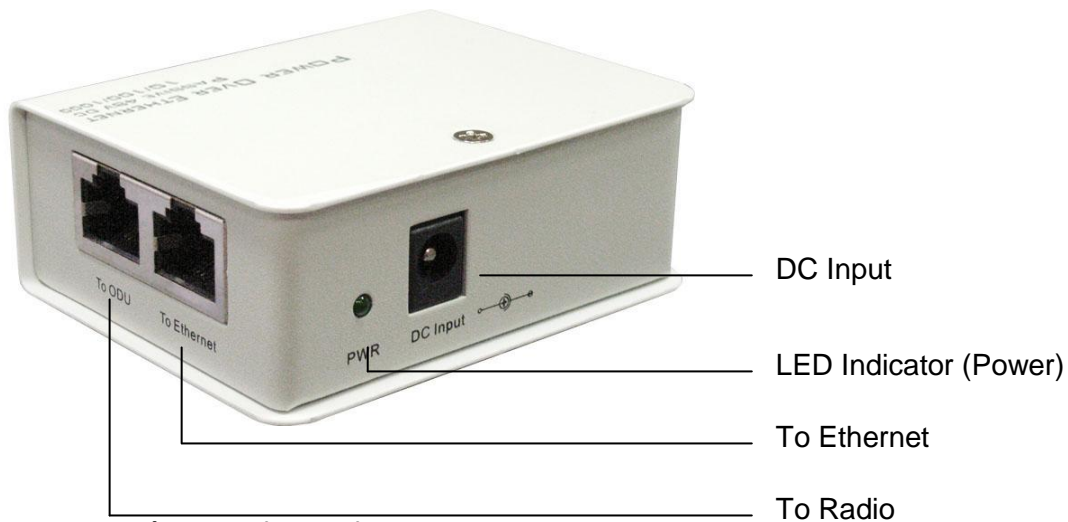
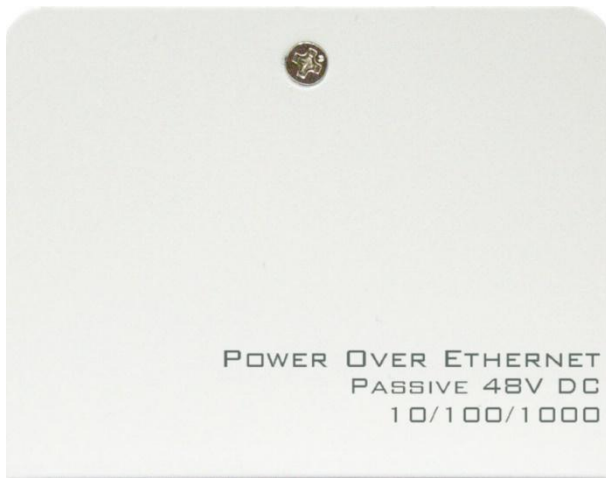
RF1- Primary

※ **Note:**

1. When you set the RF to 1x1 instead of 2x2 MIMO, only Primary port works.
2. RF1 = Wireless 1 / RF2 = Wireless 2 in the configuration page.

$$e = \sum_{n=0}^{\infty} \frac{1}{n!} = \lim_{n \rightarrow \infty} \left(\frac{1}{0!} + \frac{1}{1!} + \frac{1}{2!} + \dots + \frac{1}{n!} \right)$$

POE – 10 / 100 / 1000 with Passive 48V DC



Power Over Ethernet Injector Figure

1	To Ethernet	This RJ-45 port is used to connect to the 10 / 100 / 1000 Base T complied device such as switch, router or PC.
2	To ODU	This RJ-45 port (10 / 100 / 1000) is used to connect to the ODU. .
3	DC Input	Connect to the Power adaptor for DC input. (Passive 48V DC)
4	LED Indicator	Power LED



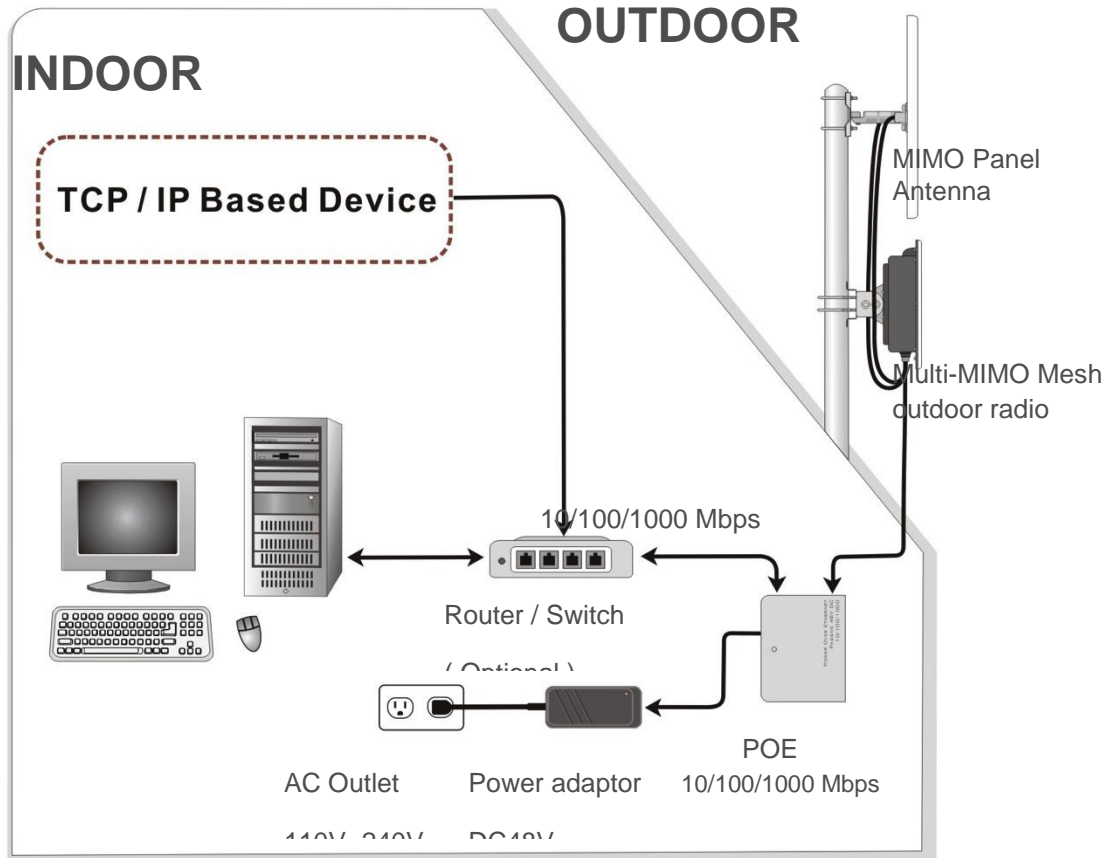
Power Over Ethernet Injector is not a waterproof unit, should not be exposed to the outdoor without any protection.

$$e = \sum_{n=0}^{\infty} \frac{1}{n!} = \lim_{n \rightarrow \infty} \left(\frac{1}{0!} + \frac{1}{1!} + \frac{1}{2!} + \dots + \frac{1}{n!} \right)$$

2-4 Hardware Installation

The 5GHz 4x4 MIMO HT-OFDM MESH Radio is a radio device, so it is susceptible to common causes of interference that can reduce throughput and range. Follow these basic guidelines to ensure the best possible performance:

- IF there is any other 5GHz RF device deployed around the outdoor radio, try to set the channel to the non-overlapping one.



Hardware Installation Figure

- Install the bridge at a height sufficient place where structures, trees, or hills do not obstruct radio signals to and from the unit. A clear line-of-sight path can guarantee the performance of the RF link.

Site Surveys

Clear and flat area provide better RF range and data rate, on the contrary, physical obstructions such as trees, electric tower, hills or buildings can reduce the performance of RF devices. Do not deploy your radios in the location where there is any obstacle between the antennas.



Configure and verify the 5GHz 4x4 MIMO HT-OFDM MESH Radio operations first before you mount the radio in a remote location.



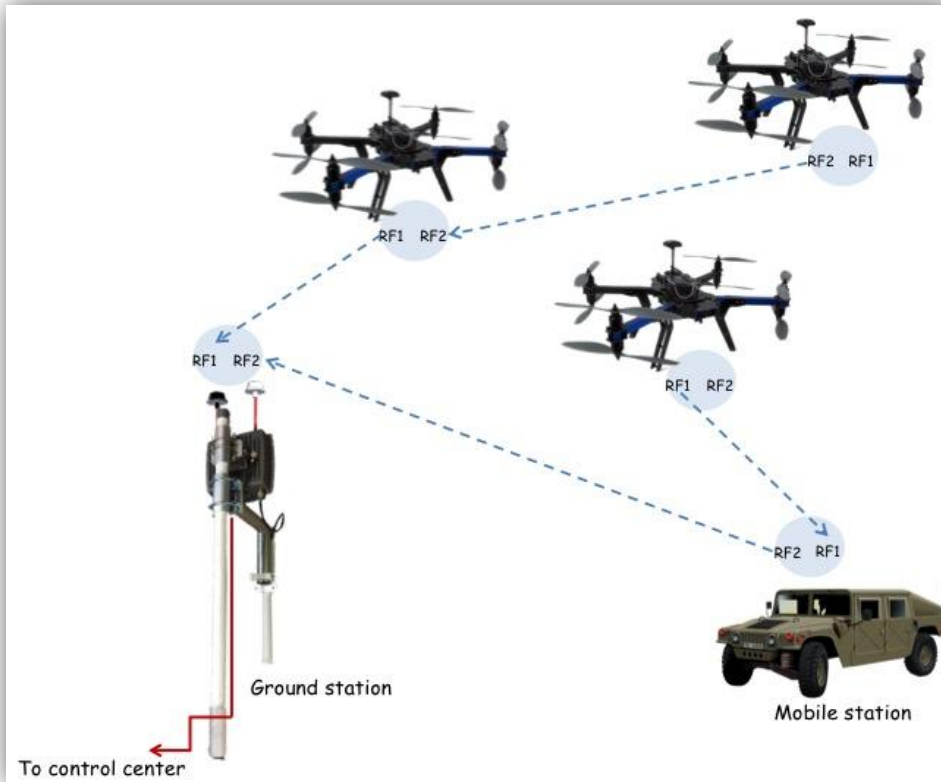
Power Over Ethernet Injector is not a waterproof unit, should not be exposed to outdoor without any protection.



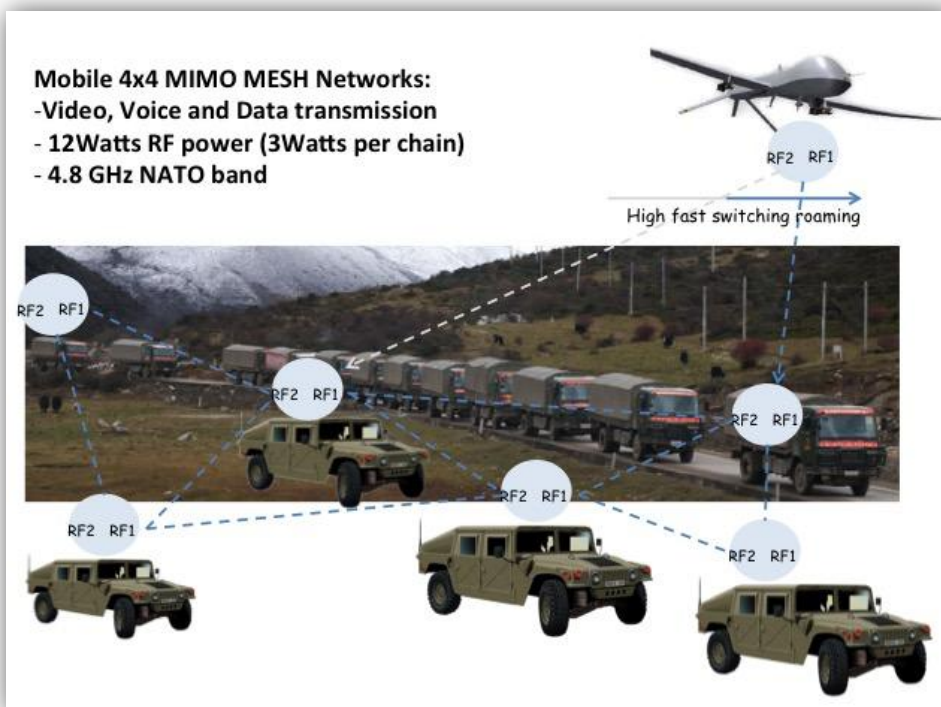
$$e = \sum_{n=0}^{\infty} \frac{1}{n!} = \lim_{n \rightarrow \infty} \left(\frac{1}{0!} + \frac{1}{1!} + \frac{1}{2!} + \dots + \frac{1}{n!} \right)$$

• Applications

1. With Ground Station



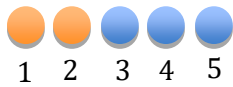
2. Without Ground Station





$$e = \sum_{n=0}^{\infty} \frac{1}{n!} = \lim_{n \rightarrow \infty} \left(\frac{1}{0!} + \frac{1}{1!} + \frac{1}{2!} + \dots + \frac{1}{n!} \right)$$

2-5 LED Indicators



BS mode: (PTP / PTMP)

Only LED 1 & 2 will be functional

LED1: On = RF enable;

Off = RF disable

LED2: On = there is CPE associated;

Off = 0 CPE associated.

CPE/ Bridge/Mesh

Disconnected: Scanning mode

LED1 ~ 5 blinking one by one.

Connected: RSSI mode



No LEDs on : RSSI < -85dBm



LED1 on: -81dB ≥ RSSI ≥ -85dBm



LED1~2 on: -76dB ≥ RSSI ≥ -80dBm



LED1~3 on: -71dB ≥ RSSI ≥ -75dBm



LED1~4 on: -66dB ≥ RSSI ≥ -70dBm



LED1~5 on: RSSI ≥ -65dBm

● **Note 1:** when the radio is configured as mesh mode, the RSSI is value is average RSSI which is calculated from all the connected mesh nodes.

● **Note 2:** LED indicator showed the status of Wireless1 and wireless 2 by turns.



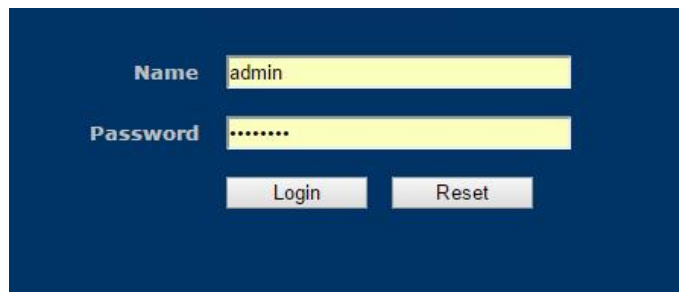
$$e = \sum_{n=0}^{\infty} \frac{1}{n!} = \lim_{n \rightarrow \infty} \left(\frac{1}{0!} + \frac{1}{1!} + \frac{1}{2!} + \dots + \frac{1}{n!} \right)$$

Chapter 3 Configuration

3-1 Start-up and Log in

In order to configure the long distance backhaul, use the web browser and please do the following:

1. Type the IP address **http://192.168.1.1** of this radio in the Location (for IE) or Address field and press Enter.
2. Enter the system name (the default setting is “**admin**”) and password (the default setting is “**password**”).
3. Click on the “**Login**” button.
- 4.



After you have logged-in the main page, the **Information, Status, MAP, System, Mesh, Wireless 1&2, Management** and **Logout** buttons will be shown in left part. The main menu provides links to the whole sections of the web configuration interface.

Information

This page shows most of the product information briefly, that includes **General Information, Network Information, MESH, Wireless Network 1, Wireless Network 2 and Wired Network**



$$e = \sum_{n=0}^{\infty} \frac{1}{n!} = \lim_{n \rightarrow \infty} \left(\frac{1}{0!} + \frac{1}{1!} + \frac{1}{2!} + \dots + \frac{1}{n!} \right)$$

Hypercable
MobiRake

- Information
- Status
- MAP
- System
- Mesh
- Wireless 1
- Wireless 2
- Management
- Logout

Information

General Information

Device Name	DEVICE002656
Device Uptime	5 days 21:36:25
Firmware Version	MiniOS v1.2.7RC10
Firmware Build Time	Feb 5 2016 10:47:26
Product Key	LQ06N-MABKA-D0AIG-OAFSQ
License	Level 2

Network Information

IP Address	192.168.1.234
Subnet Mask	255.255.255.0
Gateway Address	0.0.0.0

MESH

MESH Protocol	Enabled
MESH Ports	Wireless 1, Wireless 2
MESH Network ID	MP-MESH
Acceptable RSSI	-30 ~ -85 dBm

Information -1

Wireless Network 1

MAC Address	00:1b:5c:00:26:56
Frequency Band	4900 MHz ~ 6100 MHz
Operation Mode	MESH (Peer-to-peer)
Network Name	Wireless
Channel Bandwidth	20MHz
Channel Frequency	5500.000MHz
TX Data Rate(SS)	SS BPSK 1/2 ~ SS 64QAM 5/6
TX Data Rate(DS)	SS BPSK 1/2 ~ DS 64QAM 5/6
Coverage Range	1 Km

Wireless Network 2

MAC Address	00:1b:5c:00:26:57
Frequency Band	4900 MHz ~ 6100 MHz
Operation Mode	MESH (Peer-to-peer)
Network Name	Wireless
Channel Bandwidth	20MHz
Channel Frequency	5700.000MHz
TX Data Rate(SS)	SS BPSK 1/2 ~ SS 64QAM 5/6
TX Data Rate(DS)	SS BPSK 1/2 ~ DS 64QAM 5/6
Coverage Range	1 Km

Wired Network

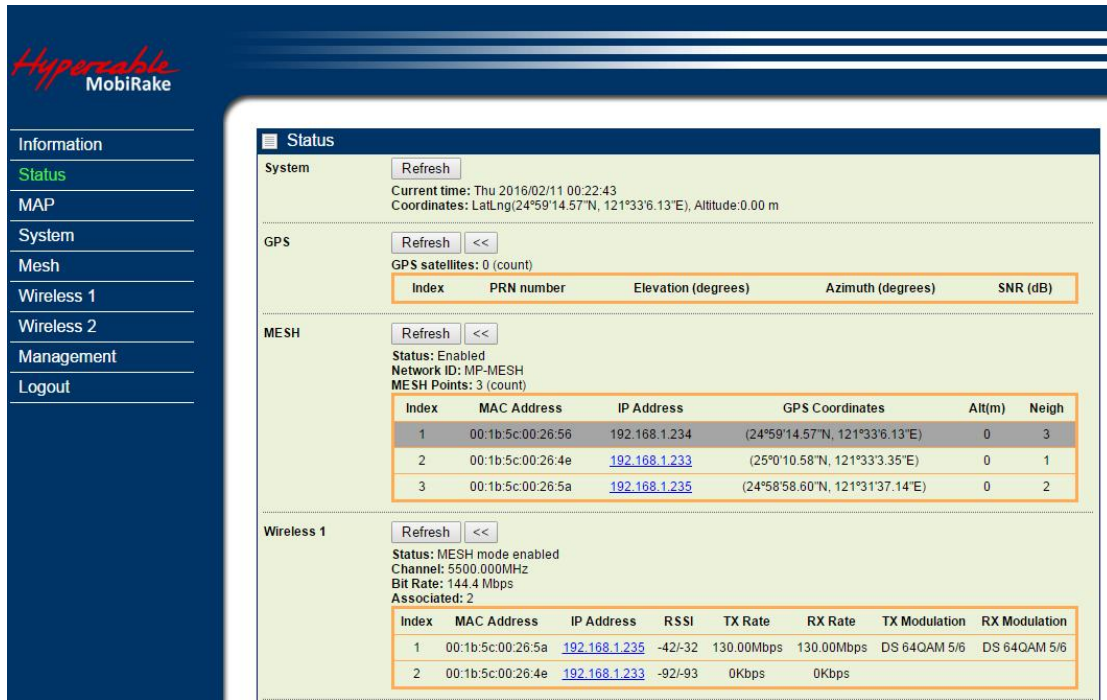
MAC Address	00:1b:5c:00:26:58
Speed	100.0 Mbps

Information -2



$$e = \sum_{n=0}^{\infty} \frac{1}{n!} = \lim_{n \rightarrow \infty} \left(\frac{1}{0!} + \frac{1}{1!} + \frac{1}{2!} + \dots + \frac{1}{n!} \right)$$

Status



Hypercable MobiRake

- Information
- Status**
- MAP
- System
- Mesh
- Wireless 1
- Wireless 2
- Management
- Logout

Status

System

Current time: Thu 2016/02/11 00:22:43
Coordinates: Lat/Lng(24°59'14.57"N, 121°33'6.13"E), Altitude:0.00 m

GPS

GPS satellites: 0 (count)

Index	PRN number	Elevation (degrees)	Azimuth (degrees)	SNR (dB)
No data available				

MESH

Status: Enabled
Network ID: MP-MESH
MESH Points: 3 (count)

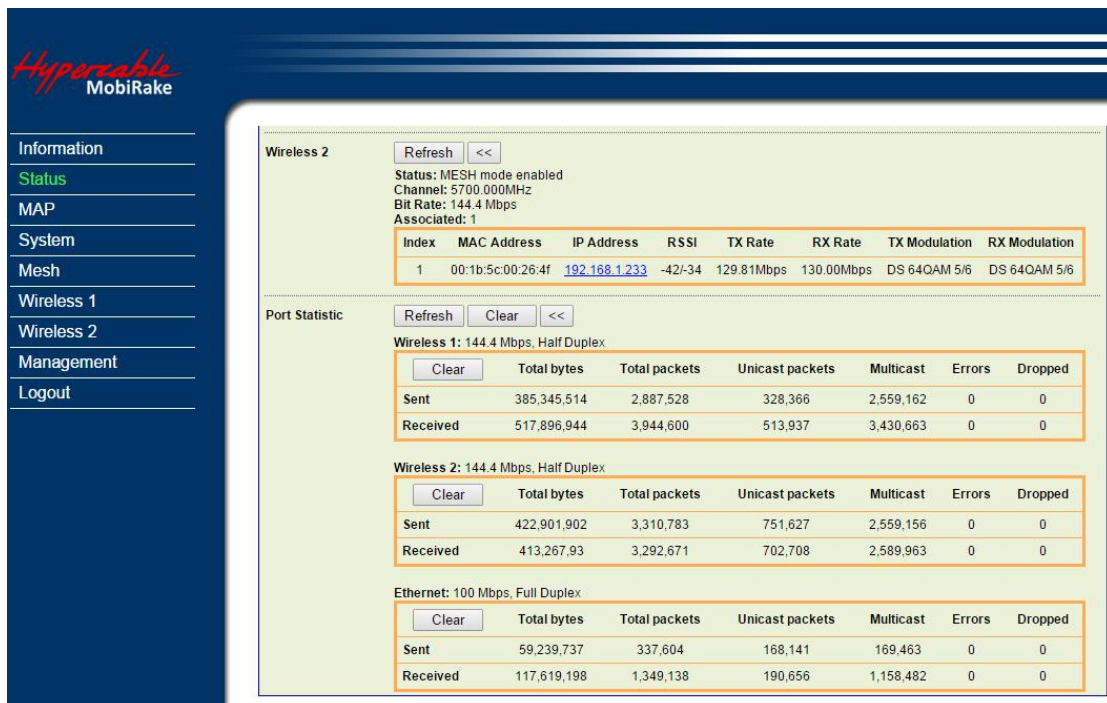
Index	MAC Address	IP Address	GPS Coordinates	Alt(m)	Neigh
1	00:1b:5c:00:26:56	192.168.1.234	(24°59'14.57"N, 121°33'6.13"E)	0	3
2	00:1b:5c:00:26:4e	192.168.1.233	(25°0'10.58"N, 121°33'3.35"E)	0	1
3	00:1b:5c:00:26:5a	192.168.1.235	(24°58'58.60"N, 121°31'37.14"E)	0	2

Wireless 1

Status: MESH mode enabled
Channel: 5500.000MHz
Bit Rate: 144.4 Mbps
Associated: 2

Index	MAC Address	IP Address	RSSI	TX Rate	RX Rate	TX Modulation	RX Modulation
1	00:1b:5c:00:26:5a	192.168.1.235	-42/-32	130.00Mbps	130.00Mbps	DS 64QAM 5/6	DS 64QAM 5/6
2	00:1b:5c:00:26:4e	192.168.1.233	-92/-93	0Kbps	0Kbps		

Status -1



Hypercable MobiRake

- Information
- Status**
- MAP
- System
- Mesh
- Wireless 1
- Wireless 2
- Management
- Logout

Wireless 2

Status: MESH mode enabled
Channel: 5700.000MHz
Bit Rate: 144.4 Mbps
Associated: 1

Index	MAC Address	IP Address	RSSI	TX Rate	RX Rate	TX Modulation	RX Modulation
1	00:1b:5c:00:26:4f	192.168.1.233	-42/-34	129.81Mbps	130.00Mbps	DS 64QAM 5/6	DS 64QAM 5/6

Port Statistic

Wireless 1: 144.4 Mbps, Half Duplex

	Total bytes	Total packets	Unicast packets	Multicast	Errors	Dropped
Sent	385,345,514	2,887,528	328,366	2,559,162	0	0
Received	517,896,944	3,944,600	513,937	3,430,663	0	0

Wireless 2: 144.4 Mbps, Half Duplex

	Total bytes	Total packets	Unicast packets	Multicast	Errors	Dropped
Sent	422,901,902	3,310,783	751,627	2,559,156	0	0
Received	413,267,93	3,292,671	702,708	2,589,963	0	0

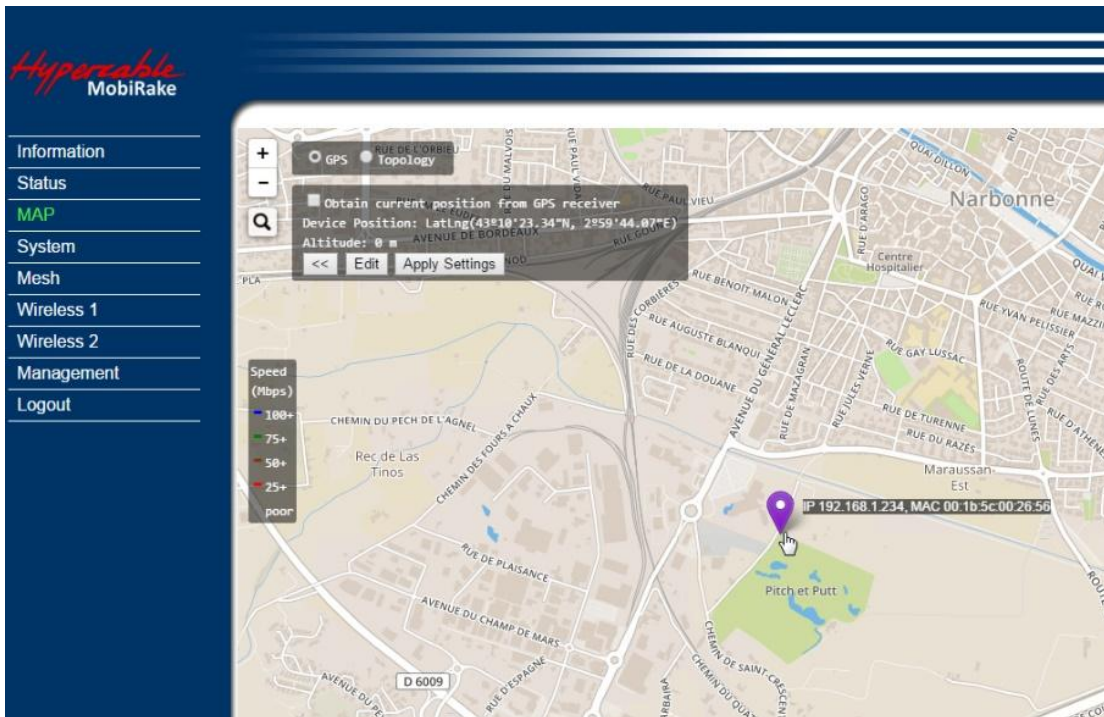
Ethernet: 100 Mbps, Full Duplex

	Total bytes	Total packets	Unicast packets	Multicast	Errors	Dropped
Sent	59,239,737	337,604	168,141	169,463	0	0
Received	117,619,198	1,349,138	190,656	1,158,482	0	0

Status -2

Map

The MAP page shows the **location / IP address / MAC address** of your radio, **GPS coordinates info**, and **Topology Status** of PTP/PTMP & Mesh Network. It also allows you to drag the radio location mark to the place wherever you want. And in topology mode, you can also monitor the **RF settings** and the **link quality** among the radios.



There are 3 ways to set the location of the radio.

1. You can select “Obtain current position from GPS receiver” with the radio type that integrated GPS module.



Attach an external GPS active antenna to the GPS port, you can see the received list of the GPS satellites.



$$e = \sum_{n=0}^{\infty} \frac{1}{n!} = \lim_{n \rightarrow \infty} \left(\frac{1}{0!} + \frac{1}{1!} + \frac{1}{2!} + \dots + \frac{1}{n!} \right)$$

Status

System

Current time: Tue 2016/03/22 20:46:56
Coordinates: LatLng(24°58'30.02"N, 121°33'1.23"E), Altitude:-64.40 m

GPS <<

GPS satellites: 8 (count)

Index	PRN number	Elevation (degrees)	Azimuth (degrees)	SNR (dB)
1	32	69	24	42.0
2	14	66	37	43.0
3	4	49	212	19.0
4	31	48	313	50.0
5	10	41	191	41.0
6	25	40	39	36.0
7	26	37	216	33.0
8	22	31	300	24.0

2. Enter the coordinates manually (this can also be done in **System / Basic Setup**) or
3. Drag the location mark of the radio to anywhere in the map you want.

MAP

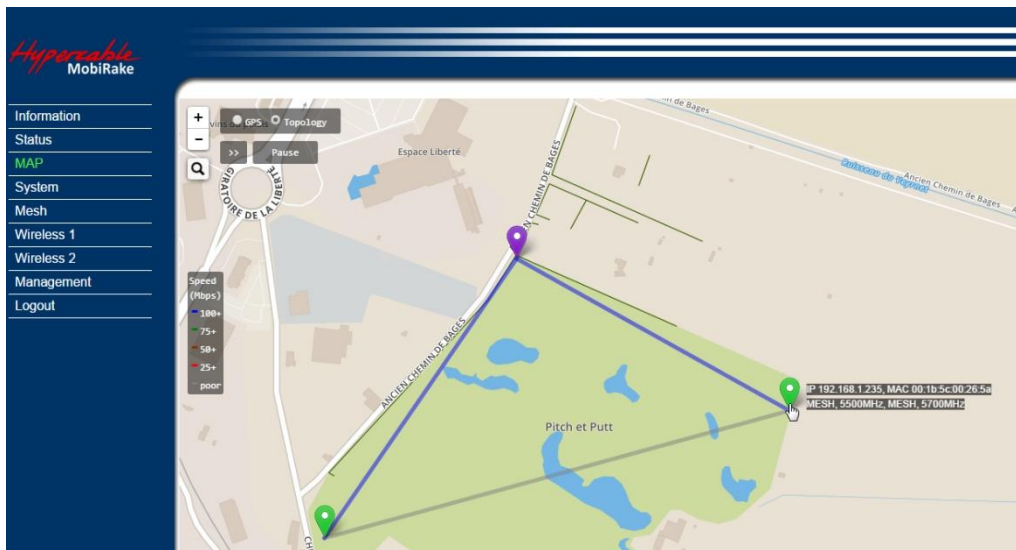
Speed (Mbps): 100+, 75+, 50+, 25+, poor

Device Position: RUE EMILE
Latitude: N 43° 10' 23.34"
Longitude: E 2° 59' 44.07"
Altitude: 0.00

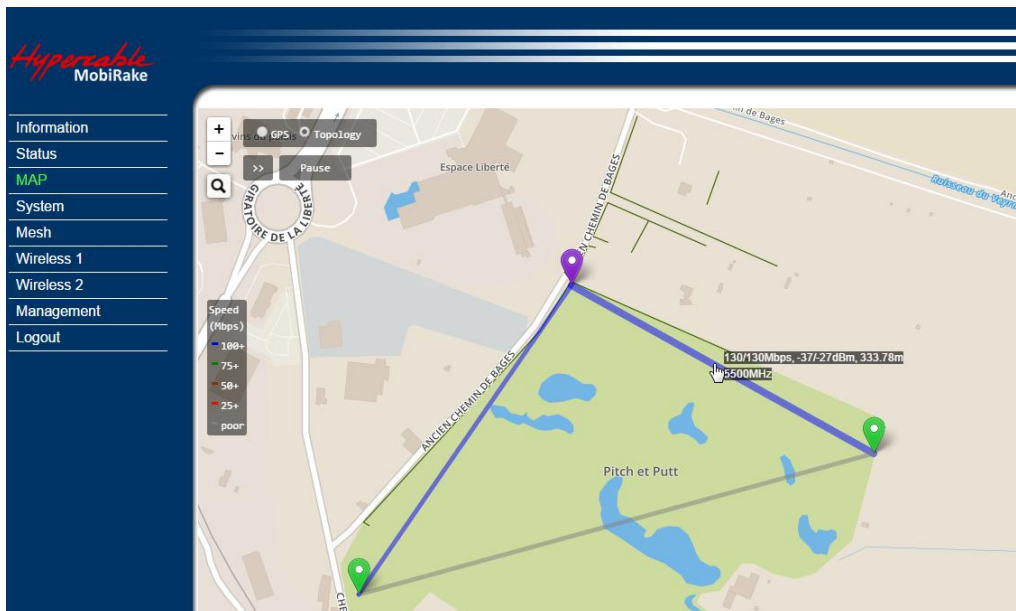


$$e = \sum_{n=0}^{\infty} \frac{1}{n!} = \lim_{n \rightarrow \infty} \left(\frac{1}{0!} + \frac{1}{1!} + \frac{1}{2!} + \dots + \frac{1}{n!} \right)$$

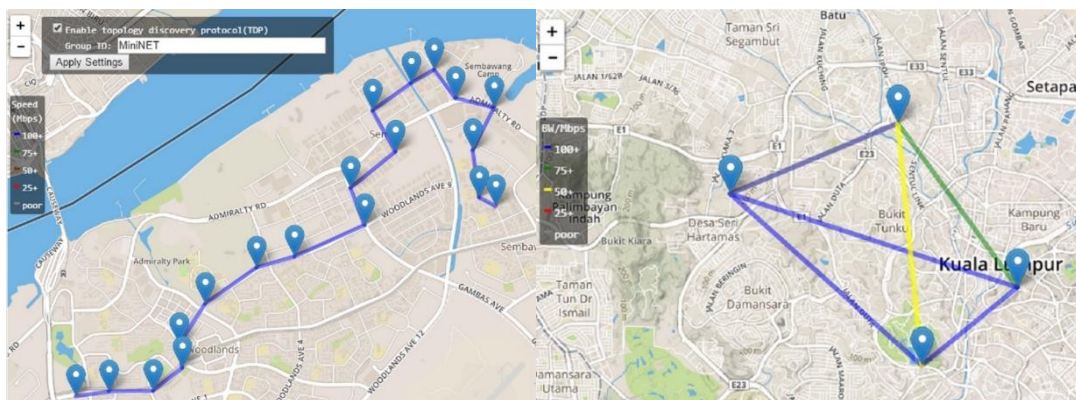
MAP – Topology



Topology Map – Radio info (IP address/ MAC / operating mode & Frequency)



Topology Map – Link status (Data rate / RSSI / Distance / Frequency)



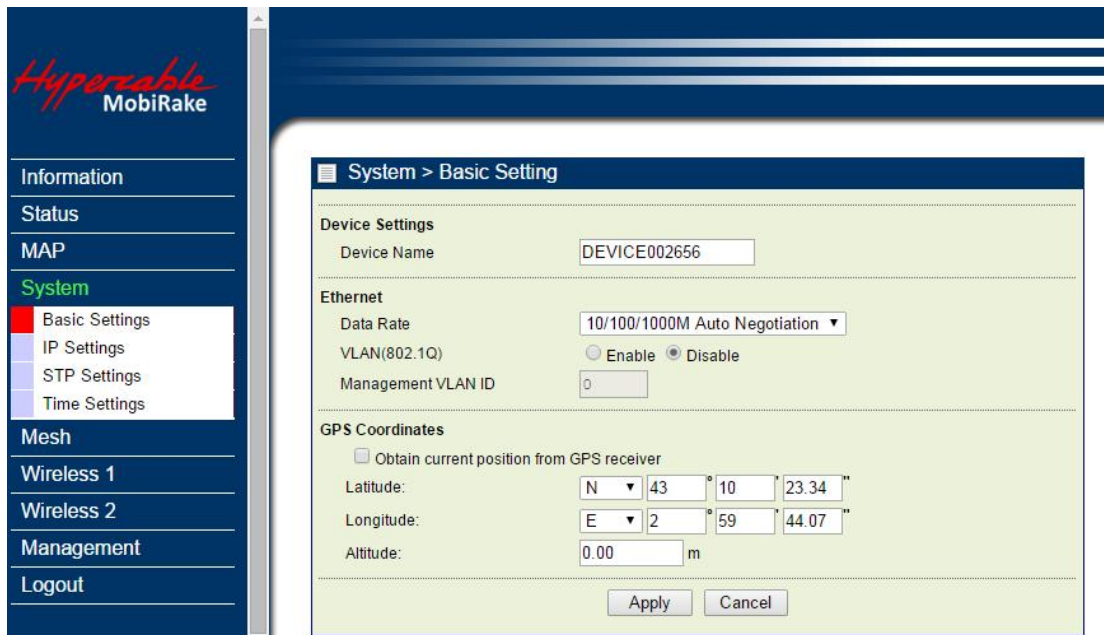
Topology Map – Multi-hops repeating

Topology Map – Mesh Network



$$e = \sum_{n=0}^{\infty} \frac{1}{n!} = \lim_{n \rightarrow \infty} \left(\frac{1}{0!} + \frac{1}{1!} + \frac{1}{2!} + \dots + \frac{1}{n!} \right)$$

System / Basic Setup



The **Device Name** is used to give a name to your 5GHz 4x4 MIMO HT-OFDM MESH Radio. This will enable you to manage your radio more easily if there are many radios in your network.

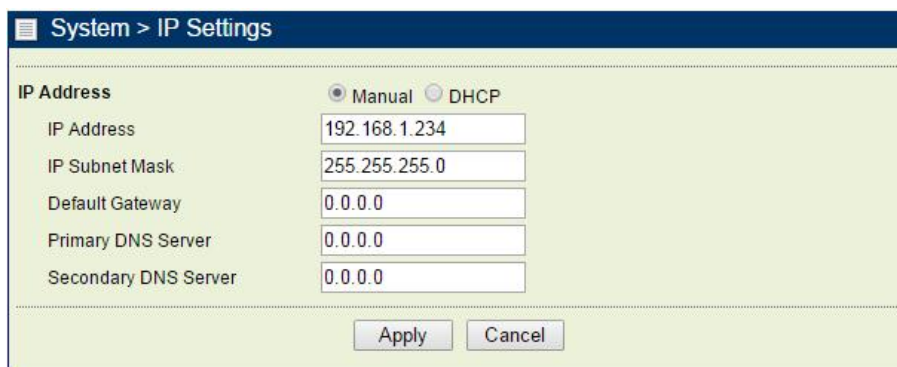
Ethernet Data Rate: you can choose the Ethernet data rate of this radio.

VLAN (802.1Q): enable this feature and assign a management Vlan ID to the radio. Those PC without same Vlan ID will not be allowed to connect this radio and configure it.

GPS Coordinates: Input the Latitude and Longitude info of the 5GHz 4x4 MIMO HT-OFDM MESH Radio's location, and click apply, radio will get the map from internet automatically.

If your radio type support integrated GPS module, you can check the select box **"Obtain current position from GPS receiver"**

System / IP Settings



IP Address: Type the IP address you want to set to your 5GHz 4x4 MIMO HT-OFDM MESH Radio (Default: 192.168.1.1).



$$e = \sum_{n=0}^{\infty} \frac{1}{n!} = \lim_{n \rightarrow \infty} \left(\frac{1}{0!} + \frac{1}{1!} + \frac{1}{2!} + \dots + \frac{1}{n!} \right)$$

IP Subnet Mask: The Wireless backhaul’s Subnet Mask must be the same as your Ethernet network. We recommended that you do NOT change the value. (Default: 255.255.255.0).

Default Gateway: The Wireless backhaul will use this value for default Gateway.

Primary DNS Server: The Wireless backhaul will use this value for primary Domain Name Server.

Secondary DNS Server: The Wireless backhaul will use this value for secondary Domain Name Server.

System / STP Settings

The screenshot shows a configuration window titled "System > STP Settings". It is divided into two main sections: "Bridge Function" and "Spanning Tree Protocol (STP)".

- Bridge Function:**
 - Ageing Time (2-300): 15 seconds
- Spanning Tree Protocol (STP):**
 - Enable (selected) / Disable
 - Bridge Priority (0-65535): 32768
 - Hello Time (1-10): 2 seconds
 - Max Age (6-40): 20 seconds
 - Forward Delay (4-30): 15 seconds

At the bottom of the window are "Apply" and "Cancel" buttons.

Ageing Time: Configure the length of time that a dynamic entry can remain in the bridge table from the time the entry is created or last updated.

Spanning tree protocol (STP): You may Enable or Disable the Spanning Tree Protocol used in this radio.

Bridge Priority	Specifies the bridge STP priority
Hello Time	Specifies the interval between the hello BPDUs
Max Age	Specifies the interval that the bridge waits to hear BPDUs from the spanning tree root
Forward Delay	Specifies a forward delay interval on the bridge

Note: If you complete the settings, please click on “Apply” for changes to take effect.



$$e = \sum_{n=0}^{\infty} \frac{1}{n!} = \lim_{n \rightarrow \infty} \left(\frac{1}{0!} + \frac{1}{1!} + \frac{1}{2!} + \dots + \frac{1}{n!} \right)$$

System / Time Setting

Current Time: While you connect this Wireless backhaul to Internet, it could automatically synchronize the current time with the Time Server that you have set.

Time Zone: You may select the appropriate local time zone for your radio from a list of all available time zones. Such as below list:

- | | |
|--|---|
| (GMT-12:00) International Date Line West | (GMT-03:00) Buenos Aires, Georgetown |
| (GMT-11:00) Midway Island, Samoa | (GMT-03:00) Greenland |
| (GMT-10:00) Hawaii | (GMT-02:00) Mid-Atlantic |
| (GMT-09:00) Alaska | (GMT-01:00) Azores |
| (GMT-08:00) Pacific Time (US & Canada); Tijuana | (GMT-01:00) Cape Verde Is. |
| (GMT-07:00) Arizona | (GMT) Casablanca, Monrovia |
| (GMT-07:00) Chihuahua, La Paz, Mazatlan | (GMT) Greenwich Mean Time: Dublin, Edinburgh, Lisbon, London |
| (GMT-07:00) Mountain Time (US & Canada) | (GMT+01:00) Amsterdam, Berlin, Bern, Rome, Stockholm, Vienna |
| (GMT-06:00) Central America | (GMT+01:00) Belgrade, Bratislava, Budapest, Ljubljana, Prague |
| (GMT-06:00) Central Time (US & Canada) | (GMT+01:00) Brussels, Copenhagen, Madrid, Paris |
| (GMT-06:00) Guadalajara, Mexico City, Monterrey | (GMT+01:00) Sarajevo, Skopje, Warsaw, Zagreb |
| (GMT-06:00) Saskatchewan | (GMT+01:00) West Central Africa |
| (GMT-05:00) Bogota, Lima, Quito | (GMT+02:00) Athens, Istanbul, Minsk |
| (GMT-05:00) Eastern Time (US & Canada) | (GMT+02:00) Bucharest |
| (GMT-05:00) Indiana (East) | (GMT+02:00) Cairo |
| (GMT-04:00) Atlantic Time (Canada) | (GMT+02:00) Harare, Pretoria |
| (GMT-04:00) Caracas, La Paz | (GMT+02:00) Helsinki, Kyiv, Riga, Sofia, Tallinn, Vilnius |
| (GMT-04:00) Santiago | (GMT+02:00) Jerusalem |
| (GMT-03:30) Newfoundland | (GMT+03:00) Baghdad |
| (GMT-03:00) Brasilia | (GMT+03:00) Kuwait, Riyadh |

GPS time settings: Sync the time with GPS module.

Time Server: the central time of the Time Server.

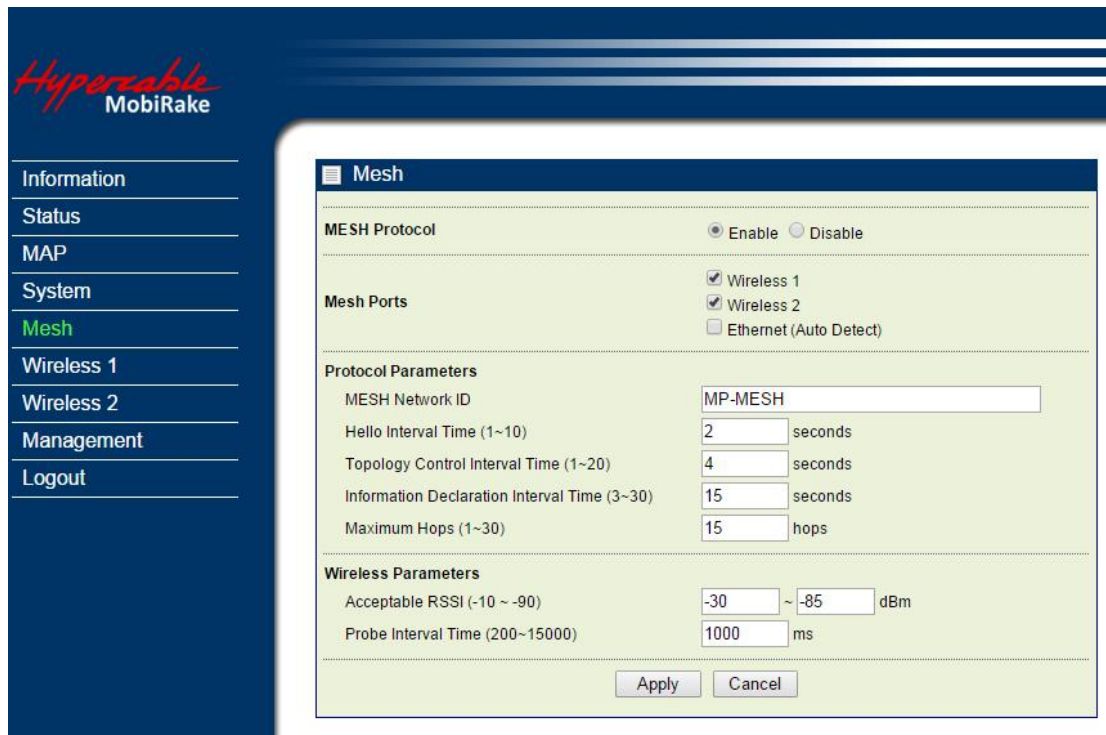
Time Server Port: the port of the Time Server.

Time server for a Lan connection to an Orange ADSL router is 192.168.1.1



$$e = \sum_{n=0}^{\infty} \frac{1}{n!} = \lim_{n \rightarrow \infty} \left(\frac{1}{0!} + \frac{1}{1!} + \frac{1}{2!} + \dots + \frac{1}{n!} \right)$$

3-2 Mesh Protocol Configuration



Mesh Protocol: You can Enable or Disable Mesh Routing protocol here.

Mesh Ports: Enable Mesh Protocol per interfaces. When the interfaced been checked, it has to connect to the other port with same mesh protocol. Otherwise, the connection will be failed. But the Ethernet port with Auto Detect can auto detect the protocol and get link automatically.

Mesh Network ID: All mesh nodes in the same network must have the same ID.

Hello interval time (1~10s): Time between Hello packets sent by the router on this interface. This value should be same for all interfaces connected to common network. The default value is 2 seconds.

Topology Control interval Time (1~20s): Topology Control message interval time. Topology control protocols are designed to exploit node density in the network to extend the network lifetime and provide connectivity. The following criteria have been identified as the key concepts for designing topology control protocols for wireless sensor networks.

1. Sensor nodes should be able to self-configure to accommodate changing network dynamics.
2. Selection of redundant nodes should be done based on distributed localized algorithms.
3. Topology control protocols must ensure minimum connectivity in the network, so that the network is not partitioned.
4. Topology control protocols should take advantage of the high node density in large-scale wireless sensor networks to reduce the energy dissipated in the network.

Maximum Hops (1~30): Define the max repeating hops in the mesh network.

Acceptable RSSI (-50~-90dBm): This RSSI threshold is an important reference parameter to decide to hold the link between the Mesh nodes or change to other better optional path.

Probe interval time: Configuring the Time Interval between Probes.



$$e = \sum_{n=0}^{\infty} \frac{1}{n!} = \lim_{n \rightarrow \infty} \left(\frac{1}{0!} + \frac{1}{1!} + \frac{1}{2!} + \dots + \frac{1}{n!} \right)$$

3-3 Wireless Setup

Wireless Setup / Radio

Wireless 1 > Radio Settings

MAC Address: 00:22:c3:01:00:00

Radio Frequency (RF): Enable Disable

Wireless Bridge Parameters

Operating Mode: Bridge (Point-to-point) ▼

Remote MAC Address: 00:00:00:00:00:00 ▼

Basic Parameters

Modulation: HTOFDM ▼

RF Bandwidth: 40MHz(20MHz+20MHz) ▼

Channel / Frequency: 5010.000MHz ▼

TX Power: max ▼

Robust Mode: Enable Disable

Tx Rates

Single Stream Mode: SS BPSK 1/2 ▼ - SS 64QAM 5/6 ▼

Dual Stream Mode: SS BPSK 1/2 ▼ - DS 64QAM 5/6 ▼

Advanced Parameters

Coverage Range (0-25 Km): 1

RTS Threshold (256-2346): 2346

A-MPDU Aggregation: Enable Disable

A-MSDU Aggregation: Enable Disable

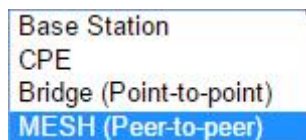
Short Guard Interval (SGI): Enable Disable

Transmission Antenna: Dual Antennas ▼

Buttons: Apply, Cancel

Radio Frequency (RF): You can enable/disable the RF interface.

Operating Mode:



Base Station

The default mode is Base Station, which can be scanned and connected by other CPEs.

CPE

Perform as a client station associated to other BS. Be sure that they share the same SSID when connected.

Bridge (Point-to-point)

Perform as a point to point bridge, enter the MAC address of the remote radio that you want to connect.

MESH (Peer-to-peer)

Perform as a mesh node in the mesh network.



$$e = \sum_{n=0}^{\infty} \frac{1}{n!} = \lim_{n \rightarrow \infty} \left(\frac{1}{0!} + \frac{1}{1!} + \frac{1}{2!} + \dots + \frac{1}{n!} \right)$$

Topology Hybrid model:

Unstructured peer-to-peer model
Client-server model: Server Mode
Client-server model: Client Mode
Hybrid model: Server Mode
Hybrid model: Client Mode

Unstructured peer to peer model

Each mesh nodes is equal to each other, free connection by the best path.

Client-server model: Server mode

Server mode can be scanned and connected by Client-server model: client mode and Hybrid model: client mode.

Client-server model: Client mode

Client mode can only connect to Client-server model: Server mode and Hybrid model: Server mode.

Hybrid model: Server mode

Hybrid model: Server mode can connect to Client-server model: Client mode, Hybrid model: Client mode and Unstructured peer to peer mode.

Hybrid model: Client mode

Hybrid model: Client mode can connect to Client-server model: Server mode, Hybrid model: Server mode and Unstructured peer to peer mode.

Wireless Network Name (SSID):

Mesh nodes, Base station and CPEs in same network must have the same network name.

Modulation: HT-OFDM, high throughput OFDM modulation.

RF Bandwidth: Decide bandwidth of Radio Frequency. Including 2.5 / 3 / 3.5 / 4 / 5 / 6 / 7 / 8 / 10 / 15 / 20 / 30 / 40 / 52 MHz, default is 20MHz.

2.5MHz
3MHz
3.5MHz
4MHz
5MHz
6MHz
7MHz
8MHz
10MHz
15MHz
20MHz
30MHz
40MHz(20MHz+20MHz)
52MHz(26MHz+26MHz)

Channel / Frequency: Set the operation frequency of the radio.

TX Rate Range: Here you can setup the min. Rate and max. Rate of the Tx Rate range.

SS BPSK 1/2	SS BPSK 1/2
SS QPSK 1/2	SS QPSK 1/2
SS QPSK 3/4	SS QPSK 3/4
SS 16QAM 1/2	SS 16QAM 1/2
SS 16QAM 3/4	SS 16QAM 3/4
SS 64QAM 2/3	DS 16QAM 1/2
SS 64QAM 3/4	DS 16QAM 3/4
SS 64QAM 5/6	DS 64QAM 2/3
	DS 64QAM 3/4
	DS 64QAM 5/6



$$e = \sum_{n=0}^{\infty} \frac{1}{n!} = \lim_{n \rightarrow \infty} \left(\frac{1}{0!} + \frac{1}{1!} + \frac{1}{2!} + \dots + \frac{1}{n!} \right)$$

TX Power: Setting power of TX, default is Max.

max
75% of max (-1dB)
60% of max (-2dB)
50% of max (-3dB)
40% of max (-4dB)
30% of max (-5dB)
25% of max (-6dB)
20% of max (-7dB)
16% of max (-8dB)
12% of max (-9dB)
10% of max (-10dB)
min

Coverage Range: The max. coverage range value will be changed by the channel BW, less channel BW can transmit longer distance. Set the proper coverage range parameters is helpful to get the stable link.

RTS Threshold: "Request to send" is the optional mechanism used by the 802.11 wireless networking protocol to reduce frame collisions introduced by the hidden node problem. Set the packet size to trigger RTS/CTS enable. This is normally set in base station side only because the hidden station problem does not exit from the perspective of the AP. RTS Threshold can be set between 256 - 2346 bytes.

A-MPDU Aggregation: Aggregate MAC Service Data Unit. The concept of A-MPDU aggregation is to join Multiple MPDU sub frames with a single leading PHY header. A key difference from A-MSDU aggregation is that A-MPDU functions after the MAC header encapsulation process. This method offer higher MAC throughput compare to A-MSDU.

A-MSDU Aggregation: Aggregate MAC Protocol Data Unit. The concept of A-MSDU is to allow multiple MSDUs to be sent to the same receiver concatenated in a single MPDU. This supporting function for A-MSDU within 802.11n is mandatory at the receiver. Due to Destination Address (DA) and sender Address (SA) in the sub-frame header must match to same receiver address (RA) and the transmitter address (TA) in the MAC header, A-MSDU cannot be used for broadcast & multicast.

Short Guard Interval (SGI): The guard interval is the space between symbols (characters) being transmitted. Adding time between symbol transmissions allows these echoes and reflections to settle in before the next symbol is transmitted. In normal 802.11 operations, the guard interval is 800ns. In good link condition without interferences, enable the short guard interval will short the time between symbol transmissions into 400ns to enhance the efficiency of data transmission.

Transmission Antenna: There are 3 antenna options for selection

Dual Antennas
Single Primary Antenna
Single Secondary Antenna

Receiving Antenna: Same as Transmission Antenna, there are 3 antenna options for selection too.

Dual Antennas
Single Primary Antenna
Single Secondary Antenna



$$e = \sum_{n=0}^{\infty} \frac{1}{n!} = \lim_{n \rightarrow \infty} \left(\frac{1}{0!} + \frac{1}{1!} + \frac{1}{2!} + \dots + \frac{1}{n!} \right)$$

Wireless Setup / Differential Tx Rates

In this page, you can set the Differential Tx rates at fixed range.

Wireless 1 > Differential TX Rates

Differential TX Rates (DTR) : Enable Disable

MAC Address TX Rates (Single Stream Mode) TX Rates (Dual Stream Mode)

MAC Address: 00:00:00:00:00:00

TX Rates (SS Mode): SS BPSK 1/2 - SS 64QAM 5/6

TX Rates (DS Mode): SS BPSK 1/2 - DS 64QAM 5/6

Wireless Setup / Security (This is NOT Available in Mesh mode)

Security/Cipher To prevent unauthorized radios from accessing data transmitted over the link, the Encryption Settings window offers WPA2 PSK features, making your data transmission over air more secure and allows you to specify Encryption Key(s).

Hypercable
MobiRake

- Information
- Status
- MAP
- System
- Mesh
- Wireless 1
 - Radio Settings
 - Differential TX Rates
 - Security Settings**
 - Access Control

Wireless 1 > Security Settings

Network Authentication: Open System

Data Encryption: None

Isolate Connected CPEs: Enable Disable

Open System – without encryption

Wireless 1 > Security Settings

Network Authentication: WPA2 PSK

Data Encryption: AES

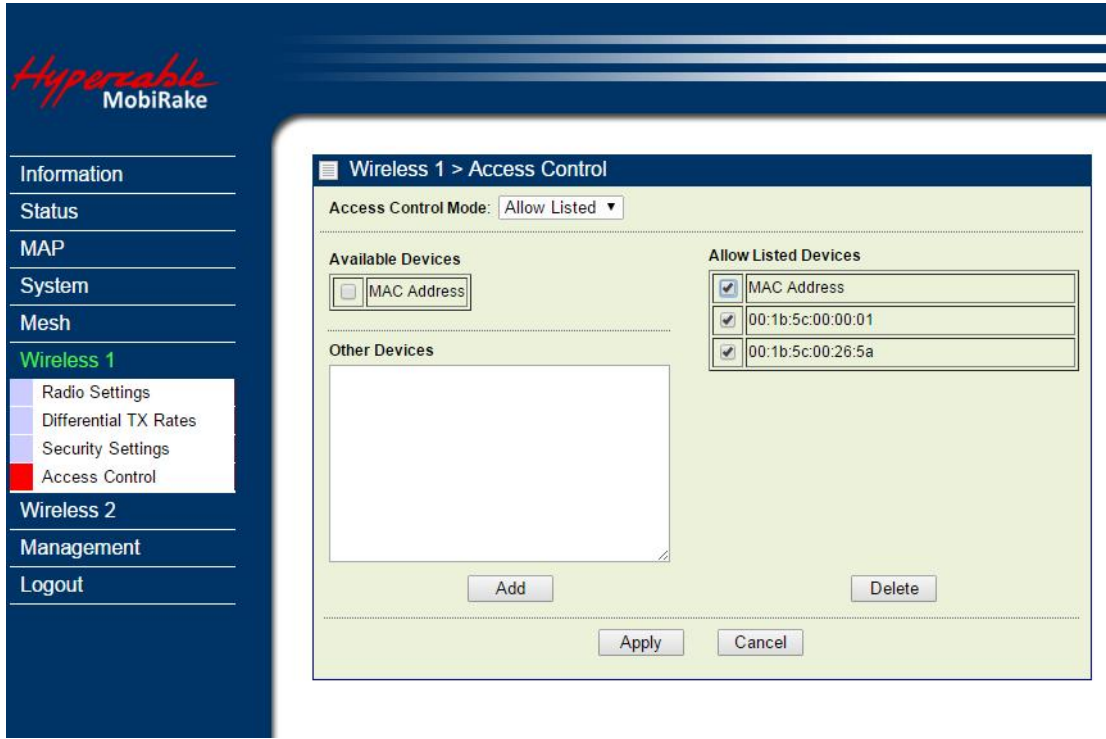
WPA Pre-shared Key (PSK): *****

WPA2 PSK – AES encryption

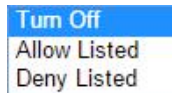


$$e = \sum_{n=0}^{\infty} \frac{1}{n!} = \lim_{n \rightarrow \infty} \left(\frac{1}{0!} + \frac{1}{1!} + \frac{1}{2!} + \dots + \frac{1}{n!} \right)$$

Wireless Setup / Access control (This is NOT Available in Mesh mode)



You can enable the MAC address Access control feature and decide which mode you want to control, Allow or Deny.



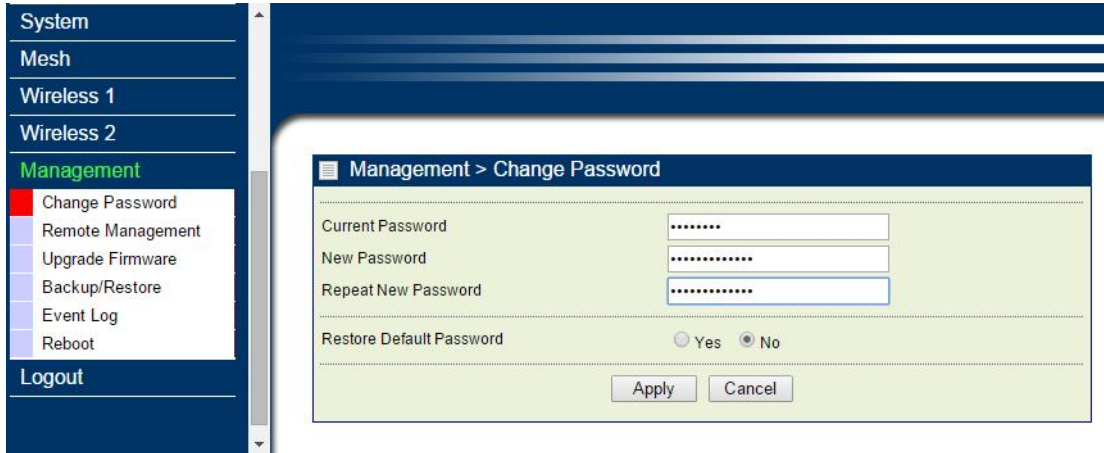


$$e = \sum_{n=0}^{\infty} \frac{1}{n!} = \lim_{n \rightarrow \infty} \left(\frac{1}{0!} + \frac{1}{1!} + \frac{1}{2!} + \dots + \frac{1}{n!} \right)$$

3-4 Management

Management / Change Password

This page allow you to change password of the 5GHz 4x4 MIMO HT-OFDM MESH Radio.

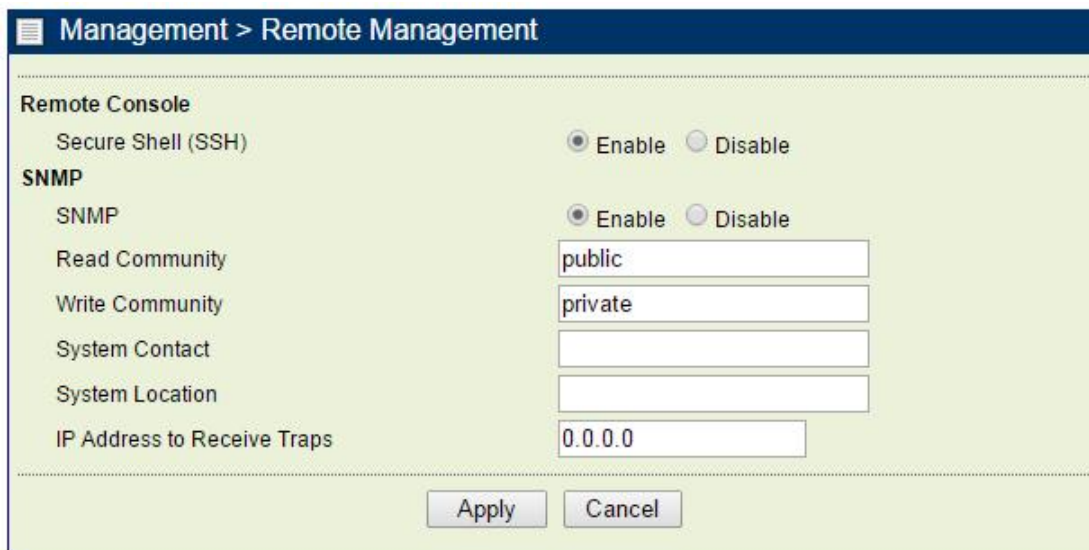


1. Key in the current password in the “Current Password” filed. Default password of this radio is “password”
2. Key in the new password to the New Password field, and then type it again into the Repeat New password field to confirm the new password.
3. Click the “Apply” button to active the settings.
4. You can restore to default password too by check the “yes” option.

Note: After you change password, please take note of your new password. Otherwise, you will not able to access the radio with correct password.

Management / Remote Management

You can doing the remote Management via Secure Shell (SSH) or SNMP by setting the parameters in this page.



Management / Upgrade Firmware

The Upgrade Firmware menu will display the Upgrade Firmware page, you can update the latest firmware to the 5GHz 4x4 MIMO HT-OFDM MESH Radio.

Please make sure that you are using the latest and correct firmware before you doing the upgrade procedure.



Below are the upgrade procedures:

- Using browser to access the main page of the 5GHz 4x4 MIMO HT-OFDM MESH Radio
- 1. Select "Upgrade Firmware" from the **Management** page.
- 2. Input the exact file path and name or select the file by clicking **Browse** button, then press **Upload** button to upgrade the firmware.
- 3. Please wait for few seconds.
- If download fail, please repeat the step 1~3 to download again.

Note! Do not power off the unit when it is being upgraded.

Management / Backup / Restore Settings

The current system settings can be saved into a file as a backup by clicking "**Backup**". The saved file can be loaded back on the radio by clicking "**Browse**". When you have selected the settings file, click "**Retrieve**" to begin the process. Furthermore, you may click "**Restore**" to factory default settings.





$$e = \sum_{n=0}^{\infty} \frac{1}{n!} = \lim_{n \rightarrow \infty} \left(\frac{1}{0!} + \frac{1}{1!} + \frac{1}{2!} + \dots + \frac{1}{n!} \right).$$

Hypercable



$$e = \sum_{n=0}^{\infty} \frac{1}{n!} = \lim_{n \rightarrow \infty} \left(\frac{1}{0!} + \frac{1}{1!} + \frac{1}{2!} + \dots + \frac{1}{n!} \right)$$

Management / Event Log

Enable SysLog if you have a Syslog Server on your network environment. If enable, you need to input the Syslog Server IP Address (default is 0.0.0.0) and the port number your Syslog Server is configured to use. The default port number is 514. The Event Log Window lists Wireless backhaul events. Click on “Refresh” to update the network events or “Save As...” to save the event into a file on your computer. Click “Apply” if you made any changes.

Management / Reboot

The Reboot screen enables you to reboot your 5GHz 4x4 MIMO HT-OFDM MESH Radio if any changes are made and you want to refresh the radio, you need to reboot the 5GHz 4x4 MIMO HT-OFDM MESH Radio. Select the “Yes” check box and click “Apply”. It will take you about 50 seconds to go through reboot. The Web-browser will not be accessible until the Wireless backhaul has finished its reboot process.

Management / Logout

Click log out when you finished all the configuration, if there is anything missed, you can selected “login again” to enter the configuration process again.



$$e = \sum_{n=0}^{\infty} \frac{1}{n!} = \lim_{n \rightarrow \infty} \left(\frac{1}{0!} + \frac{1}{1!} + \frac{1}{2!} + \dots + \frac{1}{n!} \right)$$

Hardware reset

If your Web User Interface stops responding, ping the IP address of the radio to check whether “reply” is obtained, or unplug and then plug back in the power supply of the Radio. This will reboot the Radio. If you are still unable to communicate with the Web User Interface, remove the plastic cap in the left of radio’s bottom, Then use a stick to press in and hold the RESET button for 6~9 seconds. This will reset the Radio to the factory default settings. If you applied any personal configuration settings, you will need to make the changes again.



Reset button

Reset button of the radio